

# UTIPULP

*Group of European Market Wood Pulp users*

## OCTOBER 2019

---

WORLD

&

EUROPEAN

## CHEMICAL MARKET PULP

CAVEAT:

- As of January 2016, figures of the previous months are revised regularly when modifications on past data are transmitted by National Associations

Secretariat : UTIPULP - 23 rue d'Aumale - 75009 PARIS  
Tel. : (+ 33 1) 53.89.24.91 - Fax : (+ 33 1) 53.89.24.01 - E-mail : utip@copacel.fr

## TABLE OF CONTENTS

	PAGE
1. WOOD MARKET PULP: KEY-DATA	3
2. PURCHASERS: UTIPULP COUNTRIES	7
3. PURCHASERS: JAPAN	13
4. PRODUCERS: EUROPULP	14
5. PRODUCERS: EPIS COUNTRIES	15

---

**This confidential document is available on the UTIPULP website for the following members:**

AUSTRIA	:	AUSTROPAPIER
BELGIUM	:	COBELPA
FRANCE	:	COPACEL
GERMANY	:	V.D.P.
ITALY	:	ASSOCARTA
THE NETHERLANDS	:	V.N.P.
POLAND	:	SPP
PORTUGAL	:	CELPA
SPAIN	:	ASPAPPEL
UNITED KINGDOM	:	CPI

## 1. WOOD MARKET PULP: KEY- DATA

Indicator		Period M	M	M-1	M/M-1 %	M-12	M/M-12 %	SOURCE		
PURCHASERS	<b>European Purchasers <sup>(1)</sup></b>									
	Consumption (in '000 tons)		<b>October 2019</b>	<b>1 012,6</b>	991,5	2,1%	1 056,1	-4,1%	UTIPULP	
	Inventories (in '000 tons)			<b>635,8</b>	622,0	2,2%	692,9	-8,2%		
	(in days)			<b>19,7</b>	19,2	2,6%	19,8	-0,6%		
	<b>International <sup>(1)</sup></b>									
	JAPAN	Consumption (in '000 tons)		<b>August 2019</b>	<b>144,1</b>	157,0	-8,2%	150,0	-3,9%	JAPAN PAPER ASSOCIATION
		Inventories (in '000 tons)			<b>197,6</b>	178,8	10,5%	171,8	15,0%	
		(in days)			<b>38,1</b>	34,3	10,9%	32,6	16,9%	
	PRODUCERS	<b>Inventories of woodpulp in European ports (in '000 tons)</b>								
<b>Total Inventories</b>		<b>September 2019</b>	<b>1 973,3</b>	1 982,8	-0,5%	1 379,1	43,1%	EUROPULP		
France / Switzerland			<b>170,1</b>	154,7	10,0%	122,5	38,8%			
Germany			<b>251,0</b>	290,9	-13,7%	132,1	90,0%			
Italy			<b>515,1</b>	476,3	8,1%	382,6	34,6%			
Netherlands / Belgium			<b>850,8</b>	892,0	-4,6%	584,1	45,7%			
Spain			<b>151,7</b>	136,2	11,4%	106,2	42,8%			
United Kingdom			<b>34,6</b>	32,8	5,3%	51,6	-33,0%			
<b>International</b>										
North Am.		Deliveries (in '000 tons)		<b>September 2019</b>	<b>1 213,0</b>	1 243,0	-2,4%	1 141,0	6,3%	EPIS
		Inventories (in '000 tons)		<b>August 2019</b>	<b>1 443,0</b>	1 428,0	1,1%	1 297,0	11,3%	
Latin Am. & other		Deliveries (in '000 tons)		<b>September 2019</b>	<b>3 549,0</b>	3 096,0	14,6%	3 762,0	-5,7%	
		Inventories (in '000 tons)		<b>August 2019</b>	<b>5 465,0</b>	5 586,0	-2,2%	3 949,0	38,4%	
World		Deliveries (in '000 tons)		<b>September 2019</b>	<b>4 762,0</b>	4 339,0	9,7%	4 903,0	-2,9%	
		Production		<b>August 2019</b>	<b>4 425,0</b>	4 213,0	5,0%	4 498,0	-1,6%	
		Inventories (in '000 tons)		<b>August 2019</b>	<b>6 908,0</b>	7 014,0	-1,5%	5 246,0	31,7%	
		Inventories (in days) <sup>(2)</sup>		<b>September 2019</b>	<b>44</b>	48	-8,3%	38	15,8%	

n.a : not available

European Purchasers : UTIPULP countries (Austria, Belgium, France, Germany, Italy, The Netherlands, Poland, Portugal, Spain, United Kingdom)

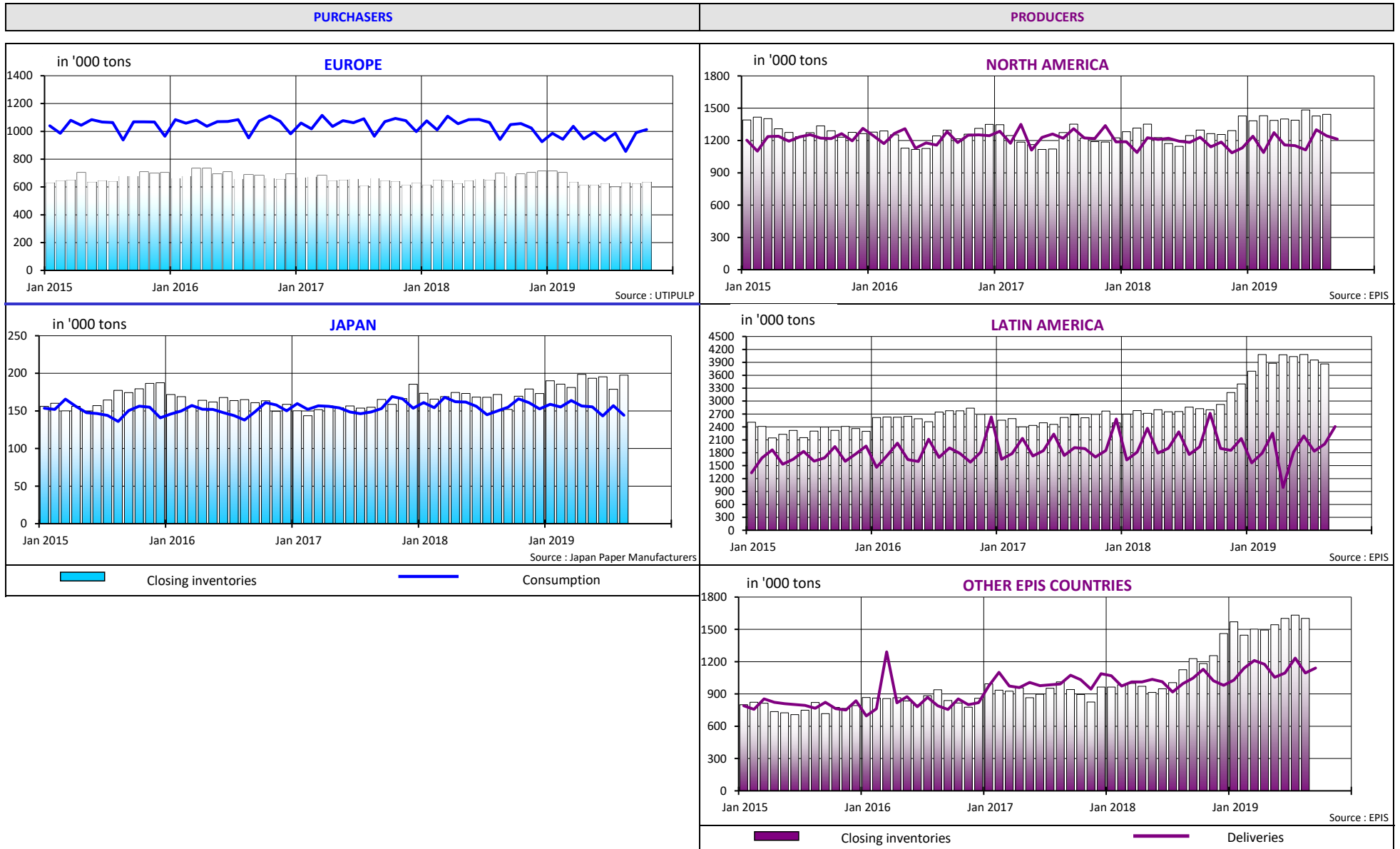
EPIS sample (world) : Argentina, Austria, Brazil, Canada, Chile, Finland, France, Germany, Japan, Morocco, New Zealand, Norway, Portugal, South Africa, South-Korea, Spain, Sweden, Uruguay, USA

(1) Not included : CTMP & DIP.

(2) Inventories in days = inventories in days of deliveries

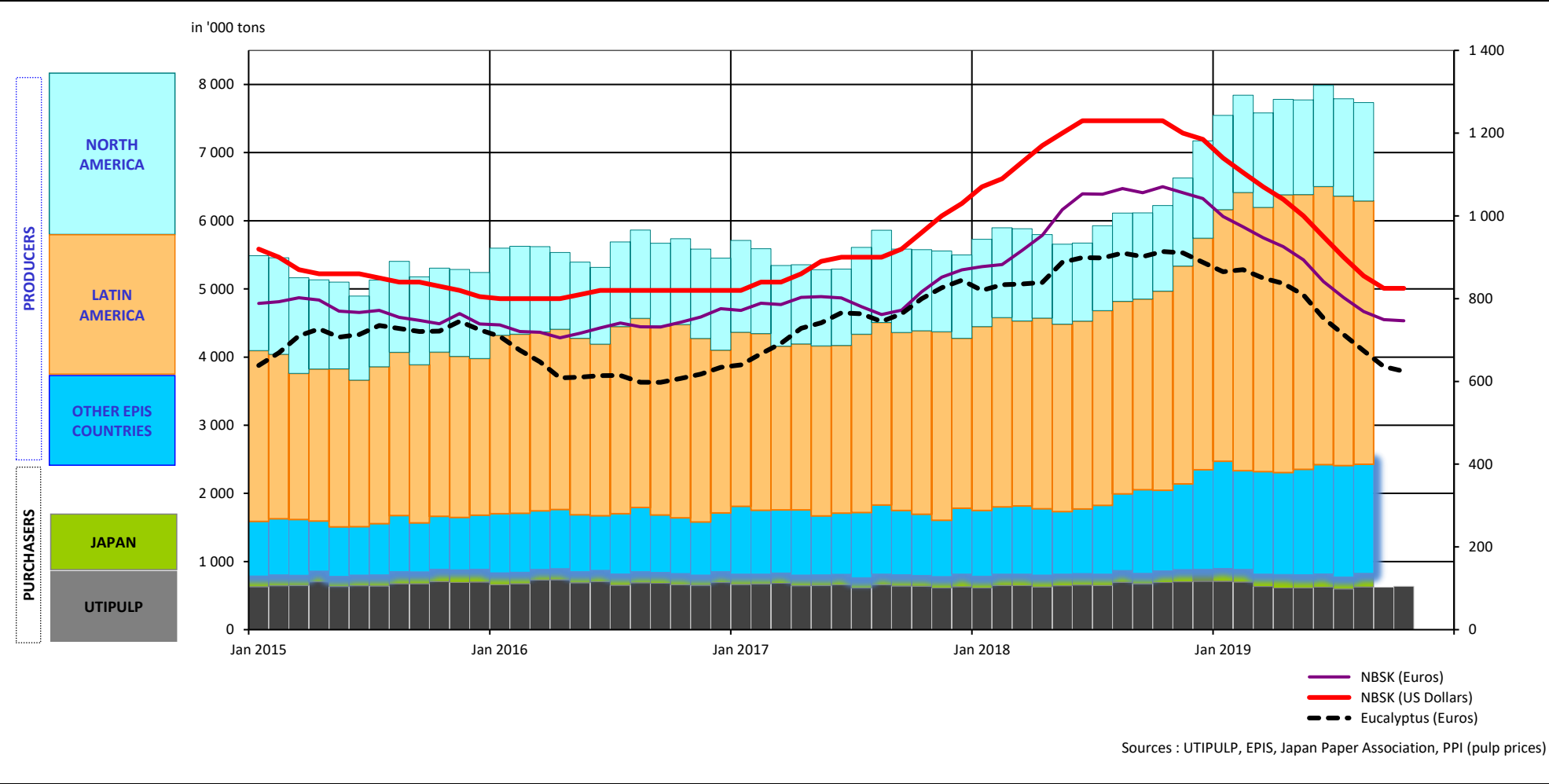
# 1. WOOD MARKET PULP: KEY-DATA

## 1.1 Purchasers and producers



# 1. WOOD MARKET PULP: KEY-DATA

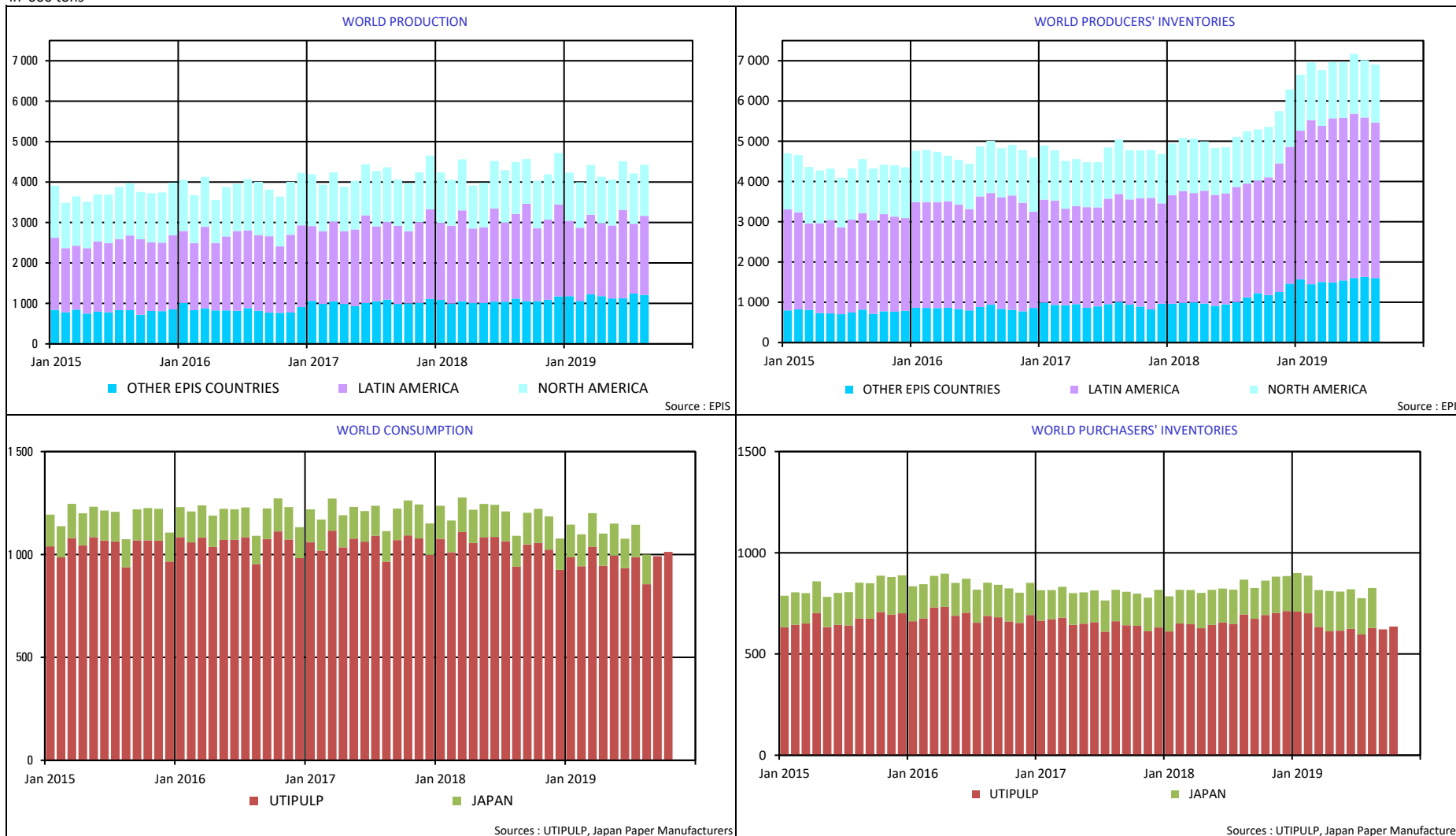
## 1.2 Producers and purchasers - wood market pulp inventories (all grades aggregated) and evolution of pulp prices



# 1. WOOD MARKET PULP: KEY-DATA

## 1.3 Production - inventories - consumption (all grades aggregated)

in '000 tons



## 2. PURCHASERS: UTIPULP COUNTRIES

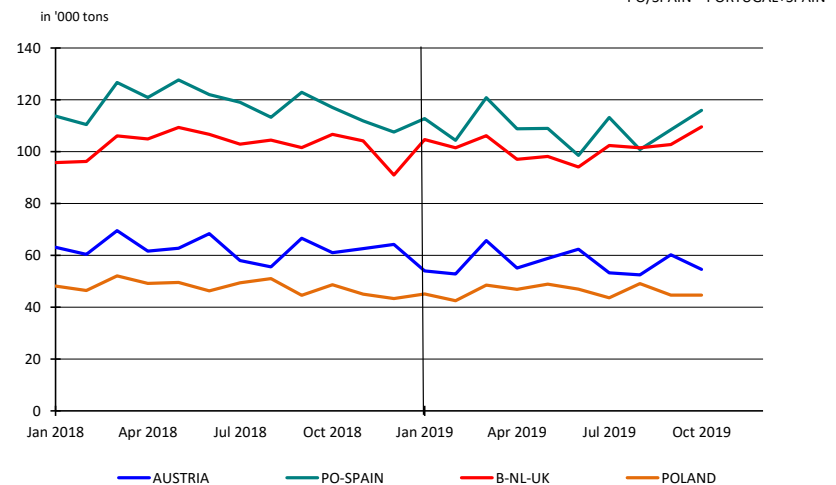
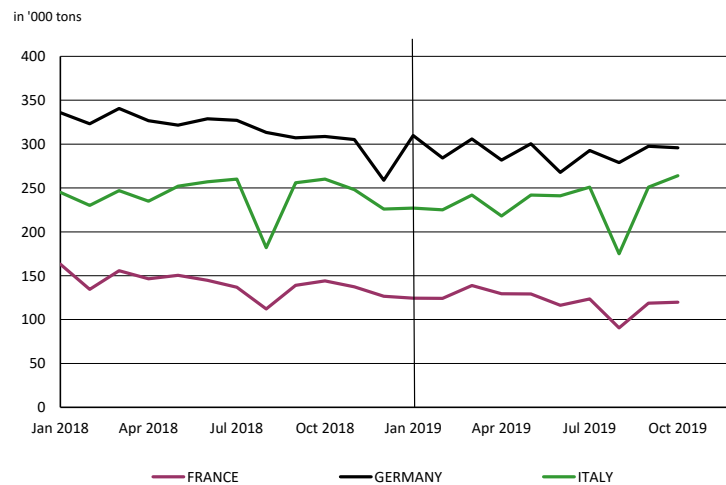
### 2.1 Consumption in tons

		2019						2018		
		BLEACHED OR SEMI-BLEACHED				TOTAL BLEACHED OR SEMI-BLEACHED		BLEACHED OR SEMI-BLEACHED		TOTAL BLEACHED OR SEMI-BLEACHED
		HARDWOOD		SOFTWOOD				HARDWOOD	SOFTWOOD	
		Tons	Y/Y-1	Tons	Y/Y-1	Tons	Y/Y-1	Tons	Tons	Tons
SEPTEMBER	AUSTRIA	25 399	-12,8%	34 837	-7,0%	60 236	-9,6%	29 130	37 479	66 609
	FRANCE	79 558	-17,1%	39 142	-8,9%	118 700	-14,6%	95 981	42 966	138 947
	GERMANY	176 349	-6,2%	121 226	1,6%	297 575	-3,1%	187 946	119 259	307 205
	ITALY	162 000	-1,2%	89 000	-3,3%	251 000	-2,0%	164 000	92 000	256 000
	PO/SPAIN	79 134	-9,6%	29 354	-17,2%	108 488	-11,8%	87 494	35 442	122 936
	B+NL+UK	57 692	2,2%	45 046	-0,2%	102 738	1,1%	56 469	45 134	101 603
	POLAND	28 561	-2,2%	16 101	4,9%	44 662	0,2%	29 204	15 347	44 551
	<b>TOTAL</b>	<b>608 693</b>	<b>-6,4%</b>	<b>374 706</b>	<b>-3,3%</b>	<b>983 399</b>	<b>-5,2%</b>	<b>650 224</b>	<b>387 627</b>	<b>1 037 851</b>
OCTOBER	AUSTRIA	23 146	-13,8%	31 425	-8,1%	54 571	-10,6%	26 841	34 190	61 031
	FRANCE	79 544	-19,3%	40 166	-11,9%	119 710	-16,9%	98 527	45 566	144 093
	GERMANY	182 244	-5,7%	113 544	-1,7%	295 788	-4,2%	193 180	115 549	308 729
	ITALY	172 000	4,2%	92 000	-3,2%	264 000	1,5%	165 000	95 000	260 000
	PO/SPAIN	86 827	1,2%	29 140	-6,8%	115 967	-0,9%	85 773	31 251	117 024
	B+NL+UK	60 576	0,6%	49 011	5,5%	109 587	2,7%	60 208	46 459	106 667
	POLAND	28 561	-11,1%	16 101	-2,7%	44 662	-8,3%	32 139	16 552	48 691
	<b>TOTAL</b>	<b>632 898</b>	<b>-4,3%</b>	<b>371 387</b>	<b>-3,4%</b>	<b>1 004 285</b>	<b>-4,0%</b>	<b>661 668</b>	<b>384 567</b>	<b>1 046 235</b>

n.a : not available

NB : the total does not take DIP nor CTMP into account.

B+NL+UK = BELGIUM+THE NETHERLANDS + UNITED KINGDOM  
PO/SPAIN = PORTUGAL+SPAIN



## 2. PURCHASERS: UTIPULP COUNTRIES

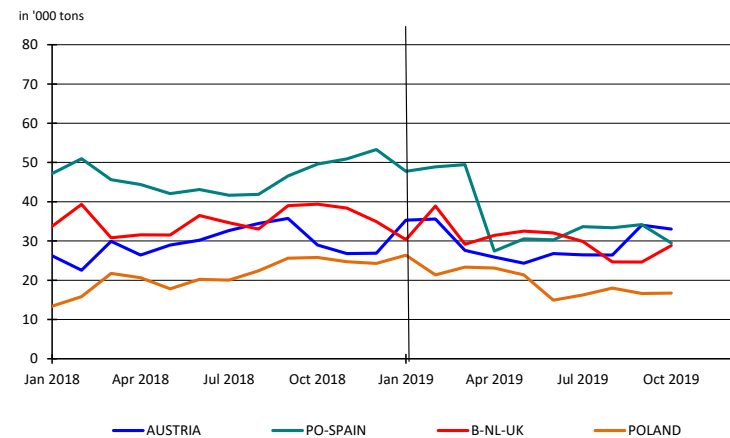
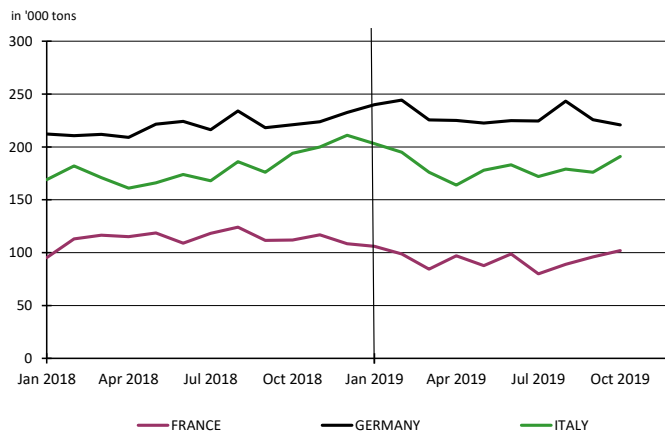
### 2.2 Inventories in tons

		2019						2018		
		BLEACHED OR SEMI-BLEACHED				TOTAL BLEACHED OR SEMI-BLEACHED		BLEACHED OR SEMI-BLEACHED		TOTAL BLEACHED OR SEMI-BLEACHED
		HARDWOOD		SOFTWOOD				HARDWOOD	SOFTWOOD	
		Tons	Y/Y-1	Tons	Y/Y-1	Tons	Y/Y-1	Tons	Tons	Tons
SEPTEMBER	AUSTRIA	15 856	-12,5%	18 173	3,1%	34 029	-4,8%	18 122	17 623	35 745
	FRANCE	74 738	-13,5%	21 285	-15,7%	96 023	-14,0%	86 416	25 252	111 668
	GERMANY	153 312	2,7%	72 410	5,1%	225 722	3,5%	149 215	68 900	218 115
	ITALY	107 000	-10,8%	69 000	23,2%	176 000	0,0%	120 000	56 000	176 000
	PO/SPAIN	19 954	-35,7%	14 248	-8,4%	34 202	-26,6%	31 013	15 562	46 575
	B+NL+UK	16 593	-41,1%	8 044	-25,8%	24 637	-36,9%	28 171	10 846	39 017
	POLAND	19 453	-42,0%	6 093	-20,2%	25 546	-37,9%	33 528	7 636	41 164
	<b>TOTAL</b>	<b>406 906</b>	<b>-12,8%</b>	<b>209 253</b>	<b>3,7%</b>	<b>616 159</b>	<b>-7,8%</b>	<b>466 465</b>	<b>201 819</b>	<b>668 284</b>
OCTOBER	AUSTRIA	20 425	6,6%	12 613	28,4%	33 038	14,0%	19 166	9 823	28 989
	FRANCE	74 344	-12,2%	27 589	1,4%	101 933	-8,9%	84 673	27 218	111 891
	GERMANY	144 242	-3,7%	76 485	7,3%	220 727	-0,2%	149 808	71 265	221 073
	ITALY	122 000	-6,2%	69 000	7,8%	191 000	-1,5%	130 000	64 000	194 000
	PO/SPAIN	15 242	-53,0%	14 242	-16,9%	29 484	-40,6%	32 464	17 146	49 610
	B+NL+UK	18 722	-31,9%	10 124	-15,0%	28 846	-26,8%	27 487	11 905	39 392
	POLAND	19 453	-42,4%	6 093	-21,9%	25 546	-38,5%	33 748	7 802	41 550
	<b>TOTAL</b>	<b>414 428</b>	<b>-13,2%</b>	<b>216 146</b>	<b>3,3%</b>	<b>630 574</b>	<b>-8,1%</b>	<b>477 346</b>	<b>209 159</b>	<b>686 505</b>

n.a : not available

NB : the total does not take DIP nor CTMP into account.

B+NL+UK = BELGIUM+THE NETHERLANDS + UNITED KINGDOM  
PO/SPAIN = PORTUGAL+SPAIN





## 2. PURCHASERS: UTIPULP COUNTRIES

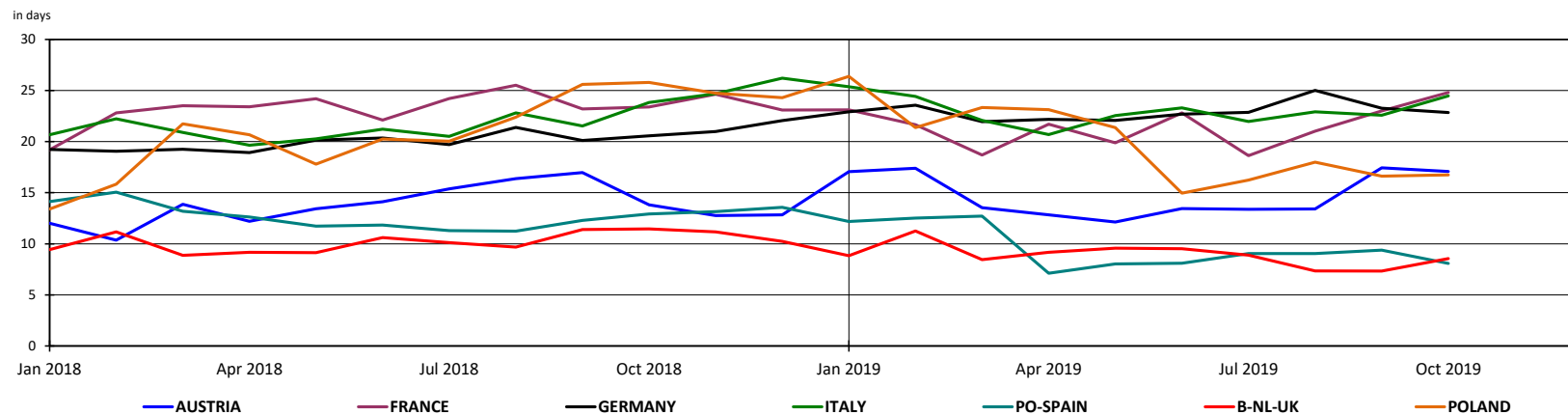
### 2.3 Inventories in days

		2019						2018		
		BLEACHED OR SEMI-BLEACHED				TOTAL BLEACHED OR SEMI-BLEACHED		BLEACHED OR SEMI-BLEACHED		TOTAL BLEACHED OR SEMI-BLEACHED
		HARDWOOD		SOFTWOOD				HARDWOOD	SOFTWOOD	
		Tons	Y/Y-1	Tons	Y/Y-1	Tons	Y/Y-1	Tons	Tons	Tons
SEPTEMBER	AUSTRIA	19	1,2%	16	5,2%	17	2,7%	19	16	17
	FRANCE	26	-2,8%	16	2,8%	23	-0,5%	27	16	23
	GERMANY	26	15,3%	19	16,8%	23	16,1%	23	16	20
	ITALY	21	-9,0%	25	35,5%	23	4,8%	23	19	22
	PO/SPAIN	8	-33,5%	14	-3,5%	9	-23,9%	11	14	12
	B+NL+UK	9	-39,9%	5	-24,5%	7	-35,1%	15	7	11
	POLAND	19	-39,4%	11	-16,4%	17	-35,1%	32	14	26
<b>TOTAL</b>	<b>20</b>	<b>-6,4%</b>	<b>17</b>	<b>13,3%</b>	<b>19</b>	<b>-0,1%</b>	<b>22</b>	<b>15</b>	<b>19</b>	
OCTOBER	AUSTRIA	25	23,9%	11	31,9%	17	23,7%	20	9	14
	FRANCE	26	0,1%	21	23,6%	25	6,1%	26	17	23
	GERMANY	25	8,0%	20	18,0%	23	11,1%	23	17	21
	ITALY	24	-4,7%	25	18,0%	24	2,7%	25	22	24
	PO/SPAIN	6	-50,9%	14	-11,1%	8	-37,4%	12	16	13
	B+NL+UK	10	-30,4%	7	-13,4%	9	-25,3%	14	8	11
	POLAND	20	-39,0%	11	-17,9%	17	-35,1%	32	14	26
<b>TOTAL</b>	<b>21</b>	<b>-6,5%</b>	<b>18</b>	<b>12,6%</b>	<b>20</b>	<b>-0,6%</b>	<b>22</b>	<b>16</b>	<b>20</b>	

n.a : not available

NB : the total does not take DIP nor CTMP into account.

B+NL+UK = BELGIUM+THE NETHERLANDS + UNITED KINGDOM  
PO/SPAIN = PORTUGAL+SPAIN



## 2. PURCHASERS: UTIPULP COUNTRIES

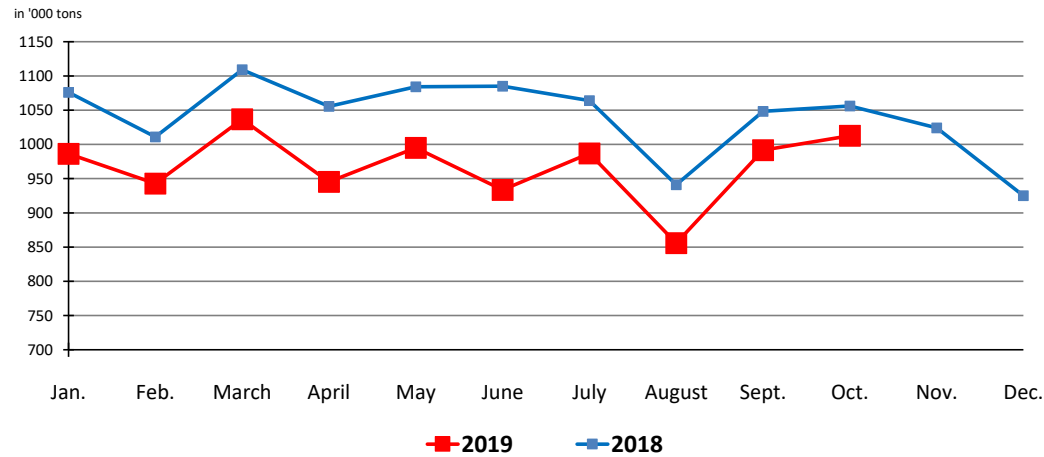
### 2.4 Consumption in tons

	2019											2018							
	UNBLEACHED		BLEACHED OR SEMI-BLEACHED								TOTAL		UNBLEACHED		BLEACHED OR SEMI-BLEACHED				TOTAL
	SULFITE & KRAFT		SULFITE				KRAFT				TOTAL		SULFITE & KRAFT		SULFITE		KRAFT		TOTAL
			HARDWOOD		SOFTWOOD		HARDWOOD		SOFTWOOD						HARDWOOD	SOFTWOOD	HARDWOOD	SOFTWOOD	
Tons	Y/Y-1	Tons	Y/Y-1	Tons	Y/Y-1	Tons	Y/Y-1	Tons	Y/Y-1	Tons	Y/Y-1	Tons	Y/Y-1	Tons	Tons	Tons	Tons	Tons	Tons
SEPTEMBER	8 083	-21,7%	12 643	-7,5%	38 927	5,3%	596 050	-6,4%	335 779	-4,2%	991 482	-5,4%	10 323	13 674	36 979	636 550	350 648	1 048 174	
OCTOBER	8 281	-16,0%	12 397	-17,7%	30 861	-0,4%	620 501	-4,0%	340 526	-3,7%	1 012 566	-4,1%	9 864	15 055	30 977	646 613	353 590	1 056 099	

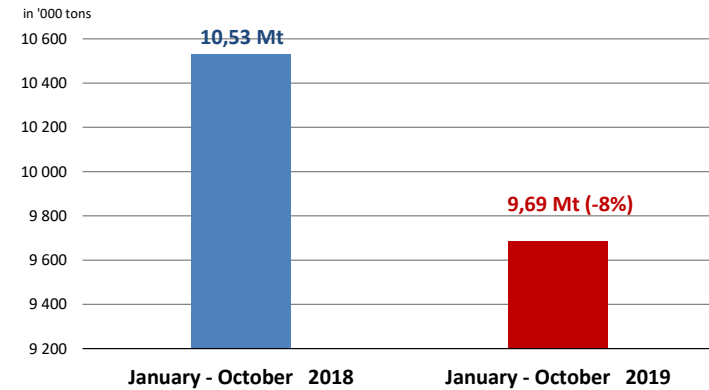
n.a : not available

NB : the total does not take DIP nor CTMP into account.

Total consumption : Monthly evolution



Total consumption : Cumulative evolution



## 2. PURCHASERS: UTIPULP COUNTRIES

### 2.5 Inventories in tons

	2019											2018							
	UNBLEACHED		BLEACHED OR SEMI-BLEACHED								TOTAL		UNBLEACHED	BLEACHED OR SEMI-BLEACHED				TOTAL	
	SULFITE & KRAFT		SULFITE				KRAFT				TOTAL		SULFITE & KRAFT	SULFITE		KRAFT		TOTAL	
			HARDWOOD		SOFTWOOD		HARDWOOD		SOFTWOOD					HARDWOOD	SOFTWOOD				
Tons	Y/Y-1	Tons	Y/Y-1	Tons	Y/Y-1	Tons	Y/Y-1	Tons	Y/Y-1	Tons	Y/Y-1	Tons	Tons	Tons	Tons	Tons	Tons		
SEPTEMBER	5 803	-0,1%	8 926	-44,5%	21 314	-3,8%	397 980	-11,6%	187 939	4,6%	621 962	-7,7%	5 809	16 089	22 155	450 376	179 664	674 093	
OCTOBER	5 246	-18,2%	7 653	-57,2%	16 690	6,2%	406 775	-11,5%	199 456	3,1%	635 820	-8,2%	6 410	17 893	15 721	459 453	193 438	692 915	

n. a : not available

NB : the total does not take DIP nor CTMP into account.

### 2.6 Inventories in days

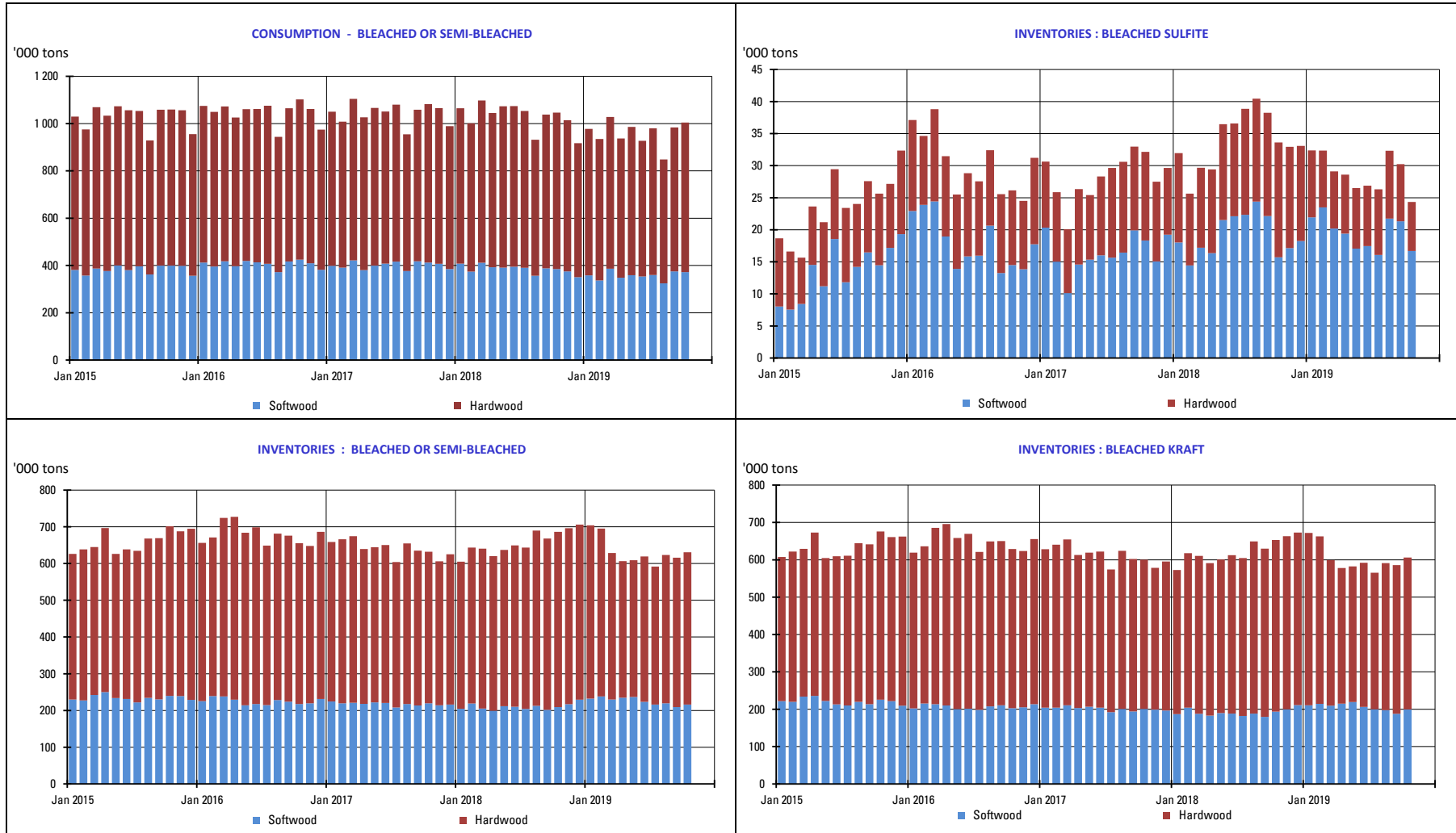
	2019											2018							
	UNBLEACHED		BLEACHED OR SEMI-BLEACHED								TOTAL		UNBLEACHED	BLEACHED OR SEMI-BLEACHED				TOTAL	
	SULFITE & KRAFT		SULFITE				KRAFT				TOTAL		SULFITE & KRAFT	SULFITE		KRAFT		TOTAL	
			HARDWOOD		SOFTWOOD		HARDWOOD		SOFTWOOD					HARDWOOD	SOFTWOOD				
in days	Y/Y-1	in days	Y/Y-1	in days	Y/Y-1	in days	Y/Y-1	in days	Y/Y-1	in days	Y/Y-1	in days	in days	in days	in days	in days	in days		
SEPTEMBER	21	28,1%	22	-31,6%	20	-2,8%	20	-5,4%	17	15,2%	19	-0,1%	16	32	21	21	15	19	
OCTOBER	19	6,1%	19	-46,5%	16	7,2%	21	-5,0%	18	13,2%	20	-0,6%	18	36	15	22	16	20	

n.a : not available

NB : the total does not take DIP nor CTMP into account.

## 2. PURCHASERS: UTIPULP COUNTRIES

### 2.7 Consumption and purchasers' stocks



### 3. PURCHASERS: JAPAN

#### 3.1 Japan pulp market: market pulp consumption and purchaser's stocks

	2019						2018		
	Consumption ('000 of tons)	Y/Y-1	Purchased Pulp Inventory ('000 of tons)	Y/Y-1	Days of Consumption	Y/Y-1	Consumption ('000 of tons)	Purchased Pulp Inventory ('000 of tons)	Days of Consumption
JAN	159	-1,4%	190	9,6%	36	8,1%	161	173	33
FEB	155	0,7%	186	12,0%	35	10,6%	154	166	32
MAR	164	-2,6%	181	7,2%	35	6,7%	168	169	32
APR	157	-3,4%	199	13,8%	38	14,0%	162	175	33
MAY	155	-4,0%	193	11,7%	37	12,7%	162	173	33
JUNE	143	-8,1%	195	16,0%	38	18,4%	156	168	32
JULY	157	8,4%	179	6,3%	34	7,7%	145	168	32
AUG	144	-3,9%	198	15,0%	38	16,9%	150	172	33
SEP							155	152	29
OCT							166	170	32
NOV							161	179	34
DEC							153	173	33

Stocks figures comprise any pulp which has been invoiced to the customer.  
The total does not take DIP nor CTMP into account.

## 4. PRODUCERS: EUROPULP

### 4.1 Europulp: inventories of woodpulp in European ports

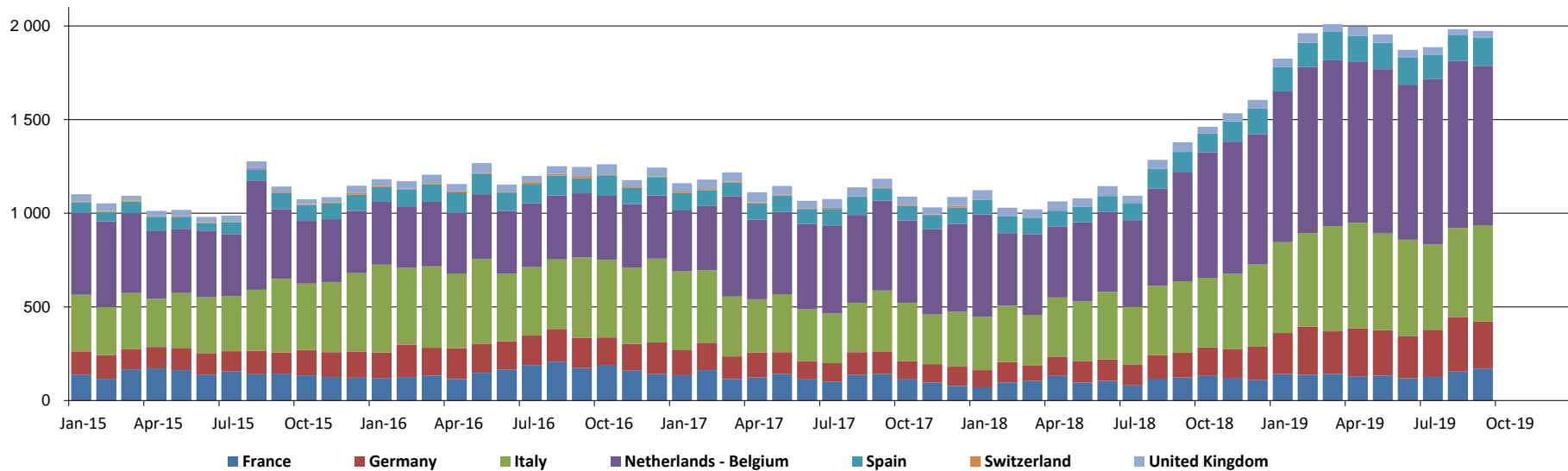
in '000 tons

PAYS		January	February	March	April	May	June	July	August	September	October	November	December
2018	France / Switzerland	70	96	106	131	96	106	81	117	123	131	121	110
	Germany	92	110	80	103	114	113	112	124	132	153	155	178
	Italy	284	300	272	315	319	362	309	371	383	371	401	440
	Netherlands* / Belgium	548	388	428	378	422	428	461	520	584	670	705	695
	Spain	79	89	87	85	82	83	92	105	106	100	108	139
	United Kingdom	51	46	48	50	46	53	38	48	52	36	44	44
	<b>Total MT</b>	<b>1 123</b>	<b>1 029</b>	<b>1 021</b>	<b>1 063</b>	<b>1 080</b>	<b>1 145</b>	<b>1 093</b>	<b>1 285</b>	<b>1 379</b>	<b>1 462</b>	<b>1 534</b>	<b>1 605</b>

PAYS		January	February	March	April	May	June	July	August	September	October	November	December
2019	France / Switzerland	141	137	142	129	133	119	126	155	170			
	Germany	219	257	227	257	243	224	252	291	251			
	Italy	485	500	562	563	515	516	456	476	515			
	Netherlands* / Belgium	804	886	885	858	878	828	884	892	851			
	Spain	130	130	152	140	142	147	129	136	152			
	United Kingdom	45	50	42	48	44	40	41	33	35			
	<b>Total MT</b>	<b>1 825</b>	<b>1 961</b>	<b>2 010</b>	<b>1 996</b>	<b>1 955</b>	<b>1 873</b>	<b>1 887</b>	<b>1 983</b>	<b>1 973</b>			

\* Figures for the Netherlands are estimated by EUROPULP (no declaration from Flushing)

in '000 tons



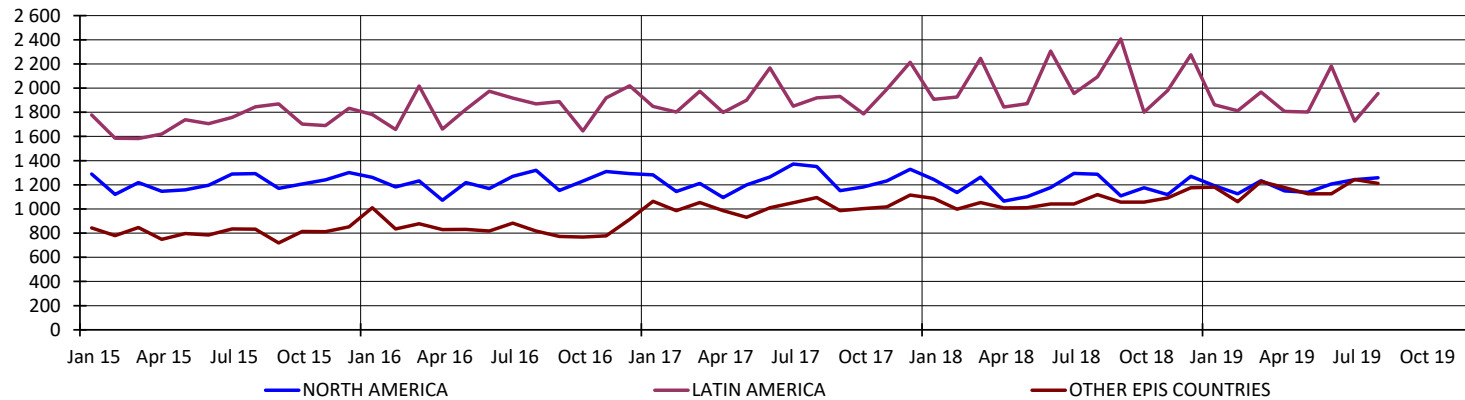
## 5. PRODUCERS: EPIS COUNTRIES

### 5.1 Production in '000 tons

		2019						2018		
		BLEACHED KRAFT				TOTAL		BLEACHED KRAFT		TOTAL
		SOFTWOOD	Y / Y-1	HARDWOOD	Y / Y-1	TOTAL	Y / Y-1	SOFTWOOD	HARDWOOD	TOTAL
JULY	NORTH AMERICA	1 087	-3,2%	156	-9,3%	1 243	-4,0%	1 123	172	1 295
	LATIN AMERICA	220	-19,7%	1 506	-10,4%	1 726	-11,7%	274	1 681	1 955
	OTHER EPIS COUNTRIES	808	20,4%	436	17,5%	1 244	19,4%	671	371	1 042
	<b>TOTAL</b>	<b>2 115</b>	<b>2,3%</b>	<b>2 098</b>	<b>-5,7%</b>	<b>4 213</b>	<b>-1,8%</b>	<b>2 068</b>	<b>2 224</b>	<b>4 292</b>
AUGUST	NORTH AMERICA	1 089	-4,1%	169	11,9%	1 258	-2,3%	1 136	151	1 287
	LATIN AMERICA	253	-9,0%	1 702	-6,2%	1 955	-6,6%	278	1 815	2 093
	OTHER EPIS COUNTRIES	773	7,7%	439	9,7%	1 212	8,4%	718	400	1 118
	<b>TOTAL</b>	<b>2 115</b>	<b>-0,8%</b>	<b>2 310</b>	<b>-2,4%</b>	<b>4 425</b>	<b>-1,6%</b>	<b>2 132</b>	<b>2 366</b>	<b>4 498</b>

NB : the total does not take DIP nor CTMP into account.

in '000 tons

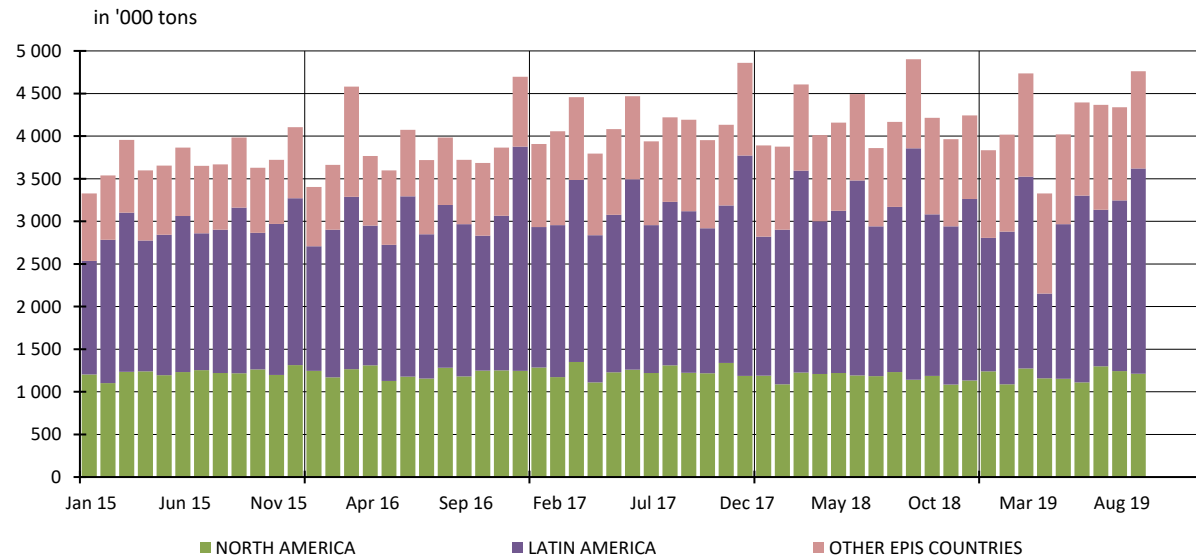


## 5. PRODUCERS: EPIS COUNTRIES

### 5.2 Deliveries in '000 tons

		2019		2018
		TOTAL	Y / Y-1	TOTAL
AUGUST	NORTH AMERICA	1 243	1,0%	1 231
	LATIN AMERICA	2 002	3,2%	1 939
	OTHER EPIS COUNTRIES	1 094	9,8%	996
	<b>TOTAL</b>	<b>4 339</b>	<b>4,2%</b>	<b>4 166</b>
SEPTEMBER	NORTH AMERICA	1 213	6,3%	1 141
	LATIN AMERICA	2 408	-11,3%	2 716
	OTHER EPIS COUNTRIES	1 141	9,1%	1 046
	<b>TOTAL</b>	<b>4 762</b>	<b>-2,9%</b>	<b>4 903</b>

NB : the total does not take DIP nor CTMP into account.





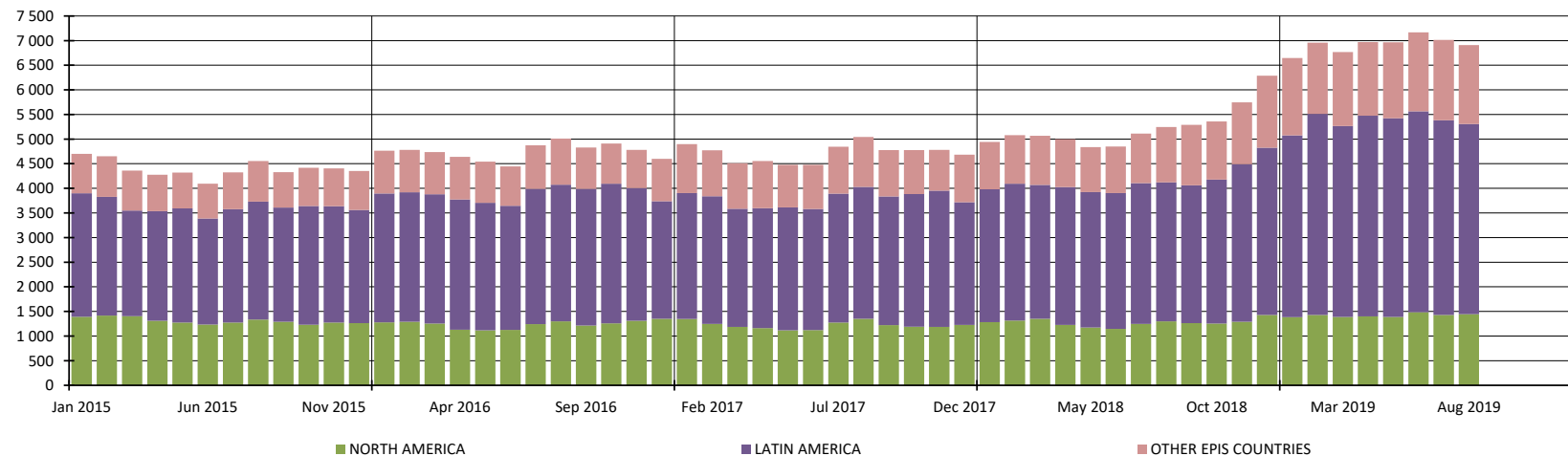
## 5. PRODUCERS: EPIS COUNTRIES

### 5.3 Closing inventories in '000 tons

		2019						2018		
		BLEACHED KRAFT				TOTAL		BLEACHED KRAFT		TOTAL
		SOFTWOOD	Y / Y-1	HARDWOOD	Y / Y-1	TOTAL	Y / Y-1	SOFTWOOD	HARDWOOD	TOTAL
JULY	NORTH AMERICA	1 244	15,3%	184	10,2%	1 428	14,6%	1 079	167	1 246
	LATIN AMERICA	257	14,2%	3 697	40,3%	3 954	38,3%	225	2 635	2 860
	OTHER EPIS COUNTRIES	1 135	75,2%	497	39,2%	1 632	62,4%	648	357	1 005
	<b>TOTAL</b>	<b>2 636</b>	<b>35,0%</b>	<b>4 378</b>	<b>38,6%</b>	<b>7 014</b>	<b>37,2%</b>	<b>1 952</b>	<b>3 159</b>	<b>5 111</b>
AUGUST	NORTH AMERICA	1 232	8,5%	211	31,1%	1 443	11,3%	1 136	161	1 297
	LATIN AMERICA	266	11,3%	3 597	39,1%	3 863	36,8%	239	2 585	2 824
	OTHER EPIS COUNTRIES	1 059	45,7%	543	36,4%	1 602	42,4%	727	398	1 125
	<b>TOTAL</b>	<b>2 557</b>	<b>21,6%</b>	<b>4 351</b>	<b>38,4%</b>	<b>6 908</b>	<b>31,7%</b>	<b>2 102</b>	<b>3 144</b>	<b>5 246</b>

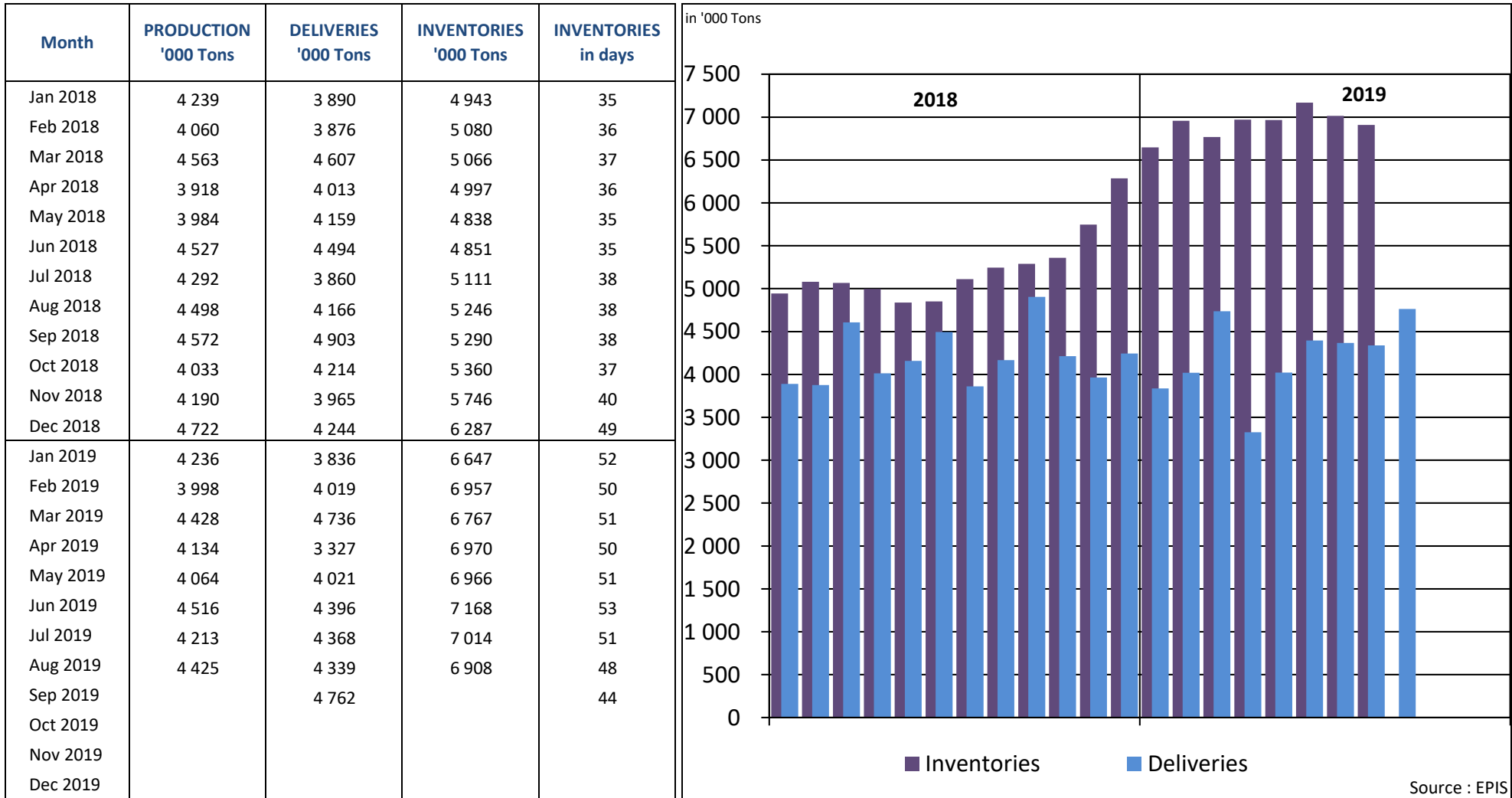
NB : the total does not take DIP nor CTMP into account.

in '000 tons



## 5. PRODUCERS: EPIS COUNTRIES

### 5.4 Word Epis sample



\* Following countries included : Argentina, Austria, Belgium, Brazil, Canada, Chile, Finland, France, Germany, Japan, New Zealand, Portugal, South Africa, South-Korea, Spain, Sweden, Uruguay, USA

## REPORT ON ANSWERS 2019

Statistics : October 2019

Deadline : 14 November 2019

Date of answer	Association	Country
13/11	AUSTROPAPIER	AUSTRIA
18/11	COBELPA	BELGIUM
15/11	COPACEL	FRANCE
14/11	V.D.P.	GERMANY
13/11	ASSOCARTA	ITALY
7/11	V.N.P.	THE NETHERLANDS
	SPP	POLAND
11/11	CELPA	PORTUGAL
14/11	ASPAPPEL	SPAIN
14/11	CPI	UNITED KINGDOM

Data are sent before the deadline

Data are sent after a reminder

No data is delivered (which means in this case that the UTIPULP Secretariat makes an estimate)